

# TESTERS

Hydraulic  
50, 75 & 200 GPM



HT50A



HT200

## 75 AND 200 GPM IN-LINE HYDRAULIC TESTERS

- Accurately measure oil flow, pressure and temperature on in-plant equipment, forklifts, machine tools and more.
- Temperature and flow readings are in Metric and English, accurate to within  $\pm 2\%$  of full scale.
- Dual pressure gauges for high and low pressure readings; low pressure gauge is automatically shut off and protected as pressure rises beyond its maximum reading.
- Automatic pressure compensating

- feature lets you increase flow without affecting pressure setting.
- Reverse flow through tester will not cause damage; replaceable safety disc ruptures if pressure exceeds upper limit.
- Solid state voltage regulator eliminates errors caused by voltage change during testing.

## 50 GPM IN-LINE HYDRAULIC TESTER

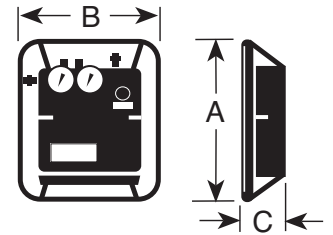
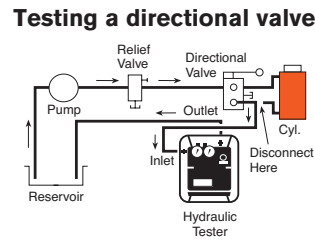
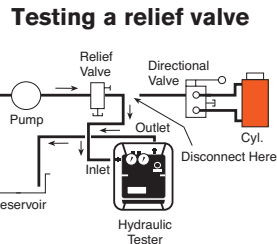
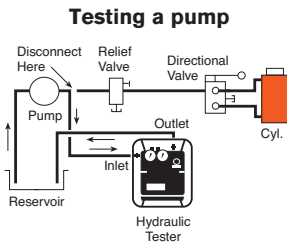
- Troubleshoots systems with capacities to 50 gpm at pressures less than 5,000 psi. Accurately measure oil flow to  $\pm 5\%$ , pressure to within 2% and tem-

perature readings within 1%.

- Pressure gauge is liquid filled to dampen system pulsation.

For more precise low pressure readings, an optional dual pressure gauge kit is available (see page 185).

**No. HT50A** – Hydraulic circuit tester with single liquid filled pressure gauge, 0-5,000 psi, 0-354 bar. Includes two adapter unions for  $\frac{3}{4}$ " male NPTF fittings. Wt., 37.0 lbs.



Order Number	Max Flow (gpm)	Flow Ranges (gpm / L/min)	Max. Oper. Pressure (psi / BAR)	Temp. Scale Range (°F / °C)	Port Sizes	Weight (lbs. / kg.)	A in. (mm)	B in. (mm)	C in. (mm)
HT50A	50	0-50 / 0-200	5,000 / 345	20-240 / -6 to 114	1 $\frac{1}{16}$ -12UN Female "O" Ring with Union Adapt. $\frac{3}{4}$ " Female NPTF	30.3 / 16.8	12 $\frac{1}{4}$ (311)	6 $\frac{1}{4}$ (159)	10 (255)
HT75	75	High: 15-75 / 50-300 Low: 3-15 / 10-60	5,000 / 345	100-250 / 40-120	$\frac{3}{4}$ " NPT Swivel	18.2 / 8.6	13 $\frac{3}{4}$ (349.25)	11 $\frac{7}{8}$ (301.62)	5 $\frac{3}{4}$ (146.05)
HT200	200	High: 25-200 / 100-750 Low: 5-40 / 20-150	5,000 / 345	100-250 / 40-120	1 $\frac{1}{2}$ "** SAE Split Flange	28.2 / 13.6	15 $\frac{7}{8}$ (403.47)	13 $\frac{1}{4}$ (336.55)	6 $\frac{3}{4}$ (171.45)

For a complete listing of accessories for the HT series of hydraulic system testers, see pages 185-186.  
\*Not included, must be ordered separately, see page 186.



# TESTER

## Hydraulic Service Accessories



**307281**

### DUAL GAUGE CONVERSION KIT FOR 50 GPM TESTER.

Provides more precise low pressure readings. Remove pressure gauge block and gauge from tester and replace it with this block. Install high pressure gauge from tester (0-5,000 psi) onto this new block.

**No. 307281** – Dual gauge conversion kit. Consists of gauge mounting block, pulsation dampener, thermal overload protector, low pressure gauge and gauge protector. Low pressure gauge calibrated 0-600 psi 0-42 bar. Wt. 1.0 lb.

### Auxiliary power cords for use with 75 and 200 gpm testers



**37045**

**No. 37045** – Auxiliary power cord. For use with any 12 or 24 volt battery to remotely power tester. Wt. 0.1 lb.

CAUTION: For use on negative ground systems only.

- 9785**
- 9786**
- 9787**
- 9788**



### Hoses

**No. 9785** – Hose, 3/4" I.D. x 3/4" NPTF male both ends. 10 ft. length. 2,250 psi working pressure. (2 req'd on 50 and 75 gpm testers). Wt., 0.7 lb.

The following hose assemblies are all 4-ply spiral wound wire, 10 ft. long. For use with 200 gpm testers.

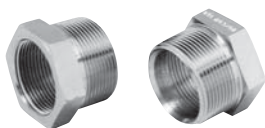
**No. 9786** – Hose, 1" I.D. x 1/4" NPT male both ends. Recommended max. flow 90 gpm, with a working pressure of 4,000 psi. Wt., 14.0 lbs.

**No. 9787** – Hose, 1 1/4" I.D. x 1/4" NPT male both ends. Recommended max. flow 140 gpm, with a working pressure of 3,000 psi. Wt., 21.0 lbs.

**No. 9788** – Hose, 1 1/2" I.D. x 1/2" NPT male both ends. Recommended max. flow 200 gpm, with a working pressure of 2,500 psi. Wt., 25.0 lbs.



**203264**



### Hose reducer bushings

**No. 203264** – Consists of two hose reducer bushings, 1 1/4" NPT female x 1 1/2" NPT male end. Needed to adapt No. 9786 1" I.D. hose and No. 9787 1 1/4" I.D. hose to tester. Wt., 2.2 lbs.